



Race or Street, XFI™ Delivers . . .

"The FAST XFI Fuel Injection System is purely amazing. After completing our 555 c.i. Big Block, we tuned the Alcohol/EFI system on the dyno, dropped the combination in the Drag News Magazine 'Project Time Machine' dragster and proceeded to run 9 passes from an 8.011 to 8.017 on the very first test session. Who needs a changeable dial-in board... wow."

- Todd Silvey Editor, Drag News Magazine

"My friends thought I was nuts to install a 632 c.i. engine in my '68 Camaro street car, but the FAST XFI makes this thing start and drive like my 2004 Silverado. But what's really amazing is how easy it was to tune, even though it was my first time. The customer service and tech support was great. Thanks FAST!"

- Rick Morehouse

XFI™ Electronic Fuel Injection System

Here's the one electronic fuel injection system with truly revolutionary features and capabilities in an easy-to-use package. The FAST™ XFI™ system precisely balances fuel and spark, allowing you to fine tune like never before. The XFI™ system comes with easy-to-navigate software that's completely configurable and allows you to set the parameters. Faster processing means no more flat spots in the power curve or settling for "close enough." XFI™ is compatible with all common ignition types, including GM HEI, LT1, LS1, -2, -6, -7 DIS, Ford EDIS (4.6L & 5.4L), and Chrysler 5.7L, 6.1L Hemi applications.

Hardware Improvements

The XFI™ uses the latest in flash microprocessor technology to deliver a significant increase in processing speed. This means the XFI™ can process, analyze and adjust four times faster than previous EFI systems. In addition, a surface mount component circuit board and billet ECU enclosure give the XFI™ superior durability. And to simplify installation, FAST™ offers engine-specific XFI™ Wiring Harnesses featuring clearly labeled connections.

Software Advances

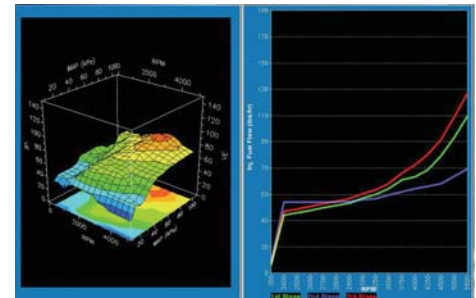
The C-Com XFI™ Windows based software is easy to navigate and incorporates several previously unavailable features such as field flashable capabilities that enable you to download the latest software updates via email or directly from the FAST™ website. Stay current without ever removing the XFI™ from your vehicle.

Special Features

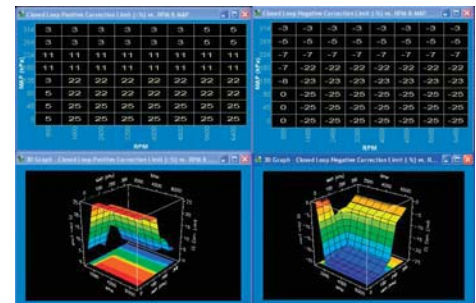
The XFI™ features Qwik Tune™ Technology, which allows ECU programming without a laptop. Preprogram up to four different EFI MAPs and select the tune-up you need with the flick of an in-car switch. Optimize one setting for everyday driving, others for racing conditions, and still another for improved fuel economy. Other features include on-board diagnostics, EZ Test™ Indicator Lights, five bar MAP sensing and controls for your power adder, and torque converter. The XFI™ also offers enhanced data logging capabilities and memory for analyzing up to 8 additional monitored inputs.

All Systems Come Standard With:

- Built-in wide-band O₂
- Fully sequential and/or bank-to-bank capability
- Individual cylinder correction
- Fan and fuel pump control
- Dynamic scaling of vectors in 2D & 3D tables
- Scalable TPS, air temp, water temp and MAP calibrations
- 1, 2, 3 and 5 bar MAP capability
- Spare user definable inputs/outputs for miscellaneous functions, such as shift light output, auxiliary fan control and EGT monitoring
- Torque converter lockup control
- Air conditioning wide open throttle cutout
- Boost control
- Enhanced 4 stage power adder controls
- Multiple calibrations stored in ECU w/ switching capability
- L-key function for easy steady-state table correction using wide-band O₂
- On-board diagnostics
- Fuel and oil pressure logging
- Adjustable injector timing
- Multiple ignition strategies, such as HEI, DIS, TFI, Ford EDIS, IPU (inductive or discreet/hall effect)



Easy to navigate C-Com XFI™ software contains the advanced features demanded by professionals, yet allows first time EFI users to tune with confidence.



XFI™ ECU (Engine Control Unit)

DESCRIPTION	PART NO.
XFI™ ECU w/ NTK O ₂	301000
XFI™ ECU w/ NTK O ₂ (For 16 Injectors Including Fuel Injector Y Adapter)	301001

XFI™ Main Harnesses

DESCRIPTION	PART NO.
GM TPI	301100
GM LT1, LS1	301101
Ford 5.0L, 5.8L, 7.5L	301102
Ford 4.6L, 5.4L	301103
Chrysler 5.7L, 6.1L Hemi	301104
Universal (Flying Lead Harness w/ Weatherpack Connectors)	301105
Rear Engine Dragster/Boat	301106
Jumper Board For Dyno Use Only (XFI™ To Previous Design)	301107
ECU Main Connector Kit (Connectors Only, No Wires)	301000K

XFI™ Fuel Injector Harnesses

DESCRIPTION	PART NO.
SBC, BBC, LT1, All Chrysler Products (Except 5.7L, 6.1L)	301200
SBC, BBC w/ 4/7 Swap Cam	301201
GM Gen III LS1, LS6	301202
Ford 4.6L, 5.0L, 5.4L, 5.8L	301203
Ford 289, 302, FE, 429, 460	301204
Y Adapter For Multiple Injector Applications	301205
Buick V6	301206
4 Cylinder	301207
Chrysler 5.7, 6.1L Hemi	301208
GM Gen III LS2, LS7	301209

